

# Cycle Time Reduction in Deck Roller Assembly Production Unit with Value Stream Mapping Analysis

Chaitanya Gangala<sup>1</sup>, Mishank Modi<sup>2</sup>, Vijaya K. Manupati<sup>3</sup>, Maria L.R. Varela<sup>2</sup>,  
Jose Machado<sup>4</sup>, and Justyna Trojanowska<sup>5</sup>(✉)

<sup>1</sup> Department of Manufacturing, School of Mechanical and Engineering Sciences,  
VIT University, Vellore 632014, TN, India  
gangal.chaitanya@gmail.com

<sup>2</sup> Department of Production and Systems, School of Engineering, University of Minho,  
Guimaraes, Portugal  
mishank.modi2015@vit.ac.in, leonilde@dps.uminho.pt

<sup>3</sup> Somesh Chowdary, School of Mechanical Engineering, Division of Manufacturing,  
VIT University, Vellore, TN, India  
manupativijay@gmail.com

<sup>4</sup> Department of Mechanical Engineering, School of Engineering, University of Minho,  
Guimarães, Portugal  
jmachado@dem.uminho.pt

<sup>5</sup> Chair of Management and Production Engineering, Poznan University of Technology,  
3 Piotrowo Street, 60-965 Poznan, Poland  
justyna.trojanowska@put.poznan.pl

**Abstract.** Cycle time reduction is of paramount importance in a manufacturing industry as the customer not only emphasizes on the quality of the product but also takes into consideration the timely delivery of the product. The proposed framework and the advanced methodology in this paper are capable of dealing with each stage of the considered manufacturing unit by maximizing the value of the product through reduction of cycle times and minimization of waste. The time required for all the processes in the manufacturing of the deck rollers is identified and are classified into value added (VA) and non-value added (NVA). Finally, the cycle times were reduced by applying the lean tools and principles on some managerial relevances. Also, Arena software was used to simulate the current and future value stream maps and the change in the cycle times, waiting times, machine utilization, etc. was determined.

**Keywords:** Lean thinking concepts · Value stream mapping · Cycle time · Arena simulation software

## 1 Introduction

Competitiveness of manufacturing enterprises depends on effective management, which can be supported by quality tools [1–4], decision-making methods [5–11], virtual reality applications [12, 13] and lean management tools. To increase efficiency, productivity and customer responsiveness in organizations a vital role plays cycle time reduction.

Cycle time is the time taken to do any particular task from the starting point of one process on a particular machine until the end of the last process in the sequence for the production of a part. This cycle time can be measured using time study techniques such as StopWatch time study, and Maynard Operation Sequence Technique (MOST) [14]. During the time study, a process can be divided into a number of work elements and are classified into value added (VA) activities which augment the value of the product such as machining, assembling, painting, etc. and non-value added (NVA) activities which have no effect on the value of the product such as loading, unloading, cleaning the machine, material handling, dimension checking, unwanted tool and operator movement.

Lean Manufacturing manages to eliminate waste, improve throughput, reduce inventory and encourage workers to bring attention to problems and suggest solutions to fix them. It was developed by Toyota Production system and can be established as a formal approach to manufacturing that aims to reduce the cycle time of processes, improve quality and increase the flexibility. The fundamental objective of Lean Manufacturing is to maximize customer value while minimizing the waste and thus achieving the manufacturing fineness by producing more value with the minimum resource. In product development phase Value Stream Mapping (VSM) plays a vital role in designing a flawless production procedure. The procedure includes eliminating the various interruptions such as factory-specific restriction while considering the manufacturing objectives such as product quality, the time required for the product to reach customer and equipment capability. In a next stage, VSM has to take care of the customer satisfaction for which the new technologies can be used in the manufacturing.

In this research work, we have developed a framework of the proposed methodology for improving the efficiency and the effectiveness of the considered case study. A case demonstrated in this paper is based on the manufacturing unit with production and assembly of deck rollers located in India. The detailed case description is demonstrated in Sect. 3. In order to achieve the objective, i.e., cycle time reduction, the research study starts with implementing the VSM analysis and a performance check of the current production process design. It includes Gemba walk for scan and plan process object by real field visit and calculation of Takt time and cycle time to draw Pareto-diagram. Pareto diagram gives the current view of the process i.e. the state of each process. These different stages can then be used to draw the current value stream map. Value stream design starts with a cycle time reduction of the process in which real optimization is possible. After the cycle time reduction, we draw the future value stream map based on the new values calculated. Thus the paper provides a validation of the used methodology by giving the production process design with a significant decrease in cycle time with higher transparency in production control.

The paper has been organized as follows: The detailed literature review is presented in Sect. 2. A brief summary of the considered product and the company background is given in Sect. 3. Section 4 provides the detailed methodology proposed to obtain the current and future value stream map by discussing the different scenarios and the novel ideas used for the improving the efficiency of the various production methods and also visualizes the improvements through future value stream maps. The ARENA based simulation and discussion about the results have been summarized in Sect. 5. In Sect. 6

the necessary conclusions are derived depending on the results from the current and future value stream map.

## 2 Literature Review

Rahul [15] aimed to improve the efficiency of a multi-model assembly line by identification and elimination of non-value added activities, making changes in workstations, improvement of the layout to eliminate unwanted operator movements, and work content reduction using postural analysis of operators by implementing REBA (Rapid Entire Body Assessment) analysis. Gnanavel [16] demonstrated the implementation of a looping layout which was designed ergonomically in the assembly line of automobile ancillary unit labor demanded lean environment. The current process line and the proposed layout were simulated, and results were compared. The analysis showed a decrease in the total cycle time, increased balancing of workloads in the production line, increased alertness among workers and therefore increased productivity.

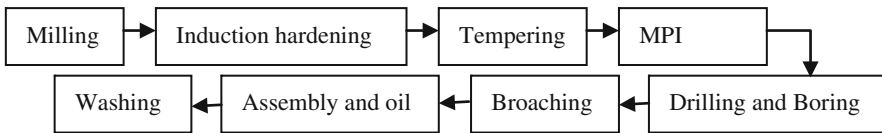
The lean thinking (LT) term was first coined by Womack [17] in his book “The Machine That Changed the World.” It suggests that the fundamental concept of the waste minimization can be achieved by questioning the basic understanding of business and manufacturing. Lean manufacturing contain such tools as cellular manufacturing (CM), line balancing, value stream mapping (VSM), Inventory control, U-line system, single minute exchange of dies (SMED), production levelling, pull system, kanban, standard work, kaizen, one piece flow, poke-yoke, visual control etc.

Value stream mapping tool can be implemented effectively by forming a current state map for eliminating the non-value added activities, also to derive a future state map for reducing the cycle time and improve the process efficiency was proposed by Arvind [18]. Seifermann [19] investigated all the available analytical techniques for work measurement. The outcome was a rating of all the work measurement methods for the Cellular Manufacturing. The applicability of this approach was verified and was used as a reference for further examination of remaining lines. The cycle time analysis, together with the use of Arena software simulation was done based on the data collected by the time study. Thus, the paper aims to use the benefit value stream mapping (VSM) approach which is a lean principle to describe the expected results through its application. The authors present the proposed methodology in Fig. 2. The VSM tool simplifies the process by eliminating the wasteful or the non-value adding activities from the process rather than just analyzing the process. The next section details the implementation of the various lean tools used for reducing the cycle times of operations and further creating a sustainable production system.

## 3 Case Study of ABC Company

This study is focused on the manufacturing of Deck Roller assembly used in surface miners, apron feeders, materials handling, automotive, textile, etc. produced in ABC industry. ABC is a major technology, engineering, construction, manufacturing and financial services conglomerate, with global operations. It addresses critical needs in the

major sectors - Hydrocarbon, Infrastructure, Power, Process Industries, and defence - for customers in over 30 countries around the world. It is engaged in core sectors of the economy, and their integrated capabilities are focused on the concept of 'design to deliver.' With over seven decades of a strong, customer-focused approach and a continuous pursuit of world-class quality, they not only have expertise in many fields like Technology, Engineering, Construction, Infrastructure Projects and Manufacturing but also maintain leadership in all the key lines of business. The Company's manufacturing footprint extends across eight countries in addition to India. The three variants available in deck roller assembly are T13, T23 and T50. There is a total of 14 operators required for the production of these components, and the average monthly demand is 250 deck rollers. This production line has been started recently, so it requires some standardization and optimization. Out of three variants available, the operations flow chart for the T23 deck roller assembly is shown in the flowchart as an example in Fig. 1.



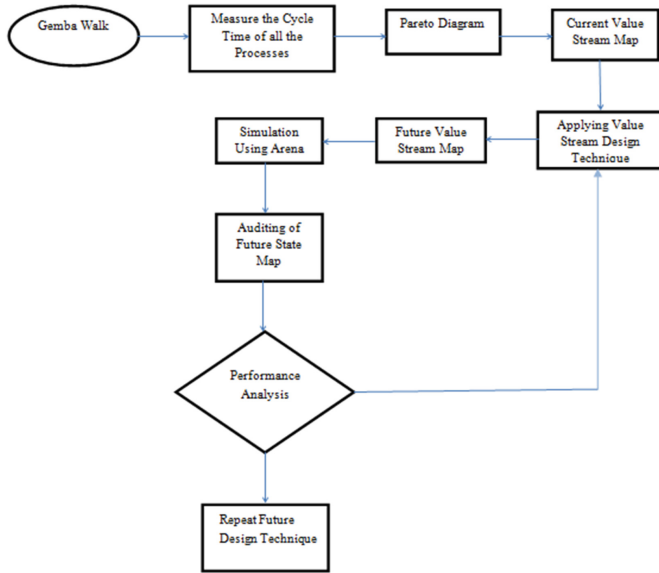
**Fig. 1.** Flow diagram for T23 deck roller

The time taken by each operator to do a specific process is different from each other. The workstation assigned to each operator varies according to the production schedule. The objective of this study is to calculate the cycle time of all the existing process using time study and work study techniques and then optimize them wherever possible using lean tools to reduce the overall cycle time of the process and to schedule the production accordingly.

## 4 Methodology

The proposed methodology for reducing cycle time is considered in a case study for the system analysis and to improve its performance by eliminating the inefficient processes. Figure 2 shows the proposed methodology approach and its step by step process of applying different methods.

These techniques include the 3G's (Gemba, Gembutsu, and Genjitsu), time study, work study and Kanban principle. Thereafter, VSM is used for drawing the current and future stream maps to compare the difference between the cycle times before and after their reduction.



**Fig. 2.** Flowchart of the proposed methodology

### 4.1 Value Stream Mapping

The word Takt in German means rhythm or pace. Takt time is the rate at which we need to produce our product to satisfy customer demand.

$$T = \frac{T_a}{D} \tag{1}$$

In Eq. (1) T represents Takt time,  $T_a$  represents total available time and D accounts for the total demand. The Takt time is calculated for the roller. The demand for rollers is 250 per week and the available time calculated by the number of working days is 26 and number of minutes per day are 460, then for 26 days the time is 10,920 min. Thus the Takt time for the rollers was obtained as 43.68 min. The calculations were carried out based on the total time available for the production of the parts and their total weekly demands. Thus the actual rate at which the production of the parts should be carried out was determined, and they act as ideal rates by which the actual production rates can be compared and improved. Cycle time represents the total time required for manufacturing a product. It takes into account the setup time, handling time, non-operation time and the actual operation time. Cycle time can be calculated for the deck roller production using the time study and work study techniques. Table 1 denotes the cycle times for different operations in the manufacture of the four variants in the return roller assembly. The process of time study has to be carried many number of times on different days and during different shifts to get the most appropriate cycle time.

**Table 1.** Cycle time tabulation – roller assembly

	T13	T23	T50
Induction Hardening	116	286	617
MPI	106	245	402
Welding	516	632	1126
Turning	739	542	2434
Assembly	1000	1100	1300

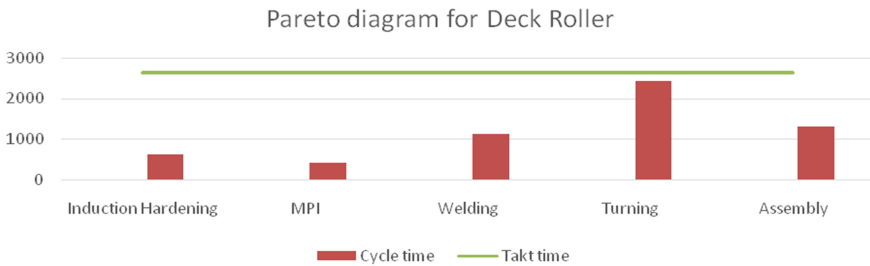
The cycle from the work study can be used for finding out the observed and normal times respectively. Equations (2) and (3) represent the formulas used for calculating the normal and standard times.

$$\text{Normal Time} = \text{Observed time} * \text{Rating} \tag{2}$$

$$\text{Standard time} = \text{Normal Time} + \text{Allowance} \tag{3}$$

Based on the cycle time observed from time study, the normal and standard times are calculated which describe the actual cycle time. The standard times take into account delays due to various factors with respect to the worker and the working environment.

For the underlying problem, Pareto diagrams for the cycle times of the production of deck rollers were developed. Figure 3 represent the Pareto diagrams for the manufacture of the deck rollers giving information about the various processing times in their manufacturing. The chart depicts the cycle times for the different processes in the production of the deck roller along with the calculated Takt time. The diagram brings to attention the extra time needed in the drilling and boring process which is considered as waste and which has to be eliminated.



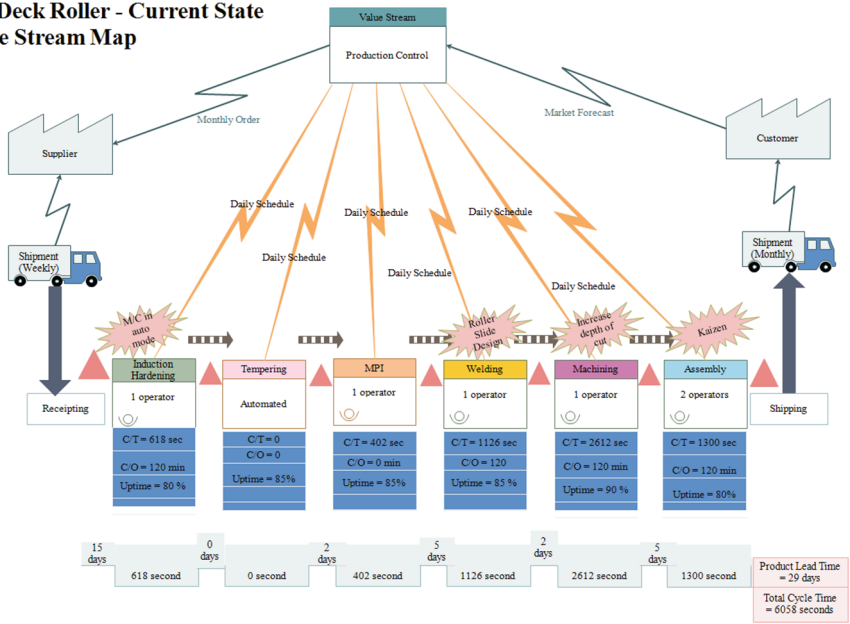
**Fig. 3.** Pareto diagram for T23 Deck Roller

#### 4.2 Analysis of Current to Future Value Stream Map

The present value stream map has been generated using the information obtained from the proposed methodology. For the production of deck rollers the Takt times, cycle times (CTs) of different processes, the utilization of the machines, and convert times (Cos) were calculated.

Figure 4 demonstrates the current value stream map for the production of the T23 Deck roller. In the figure the different processes required in the manufacture of the deck roller are shown in boxes along with the information about the number of operators needed for each process. Also, every process has a data box underneath which includes the CT of the processes and the CO time. Different lead times between the various processes are also shown in the form of a timeline, which helps in analyzing the total lead time for the product that comes out to be five days. The second component of the timeline is the value-added or processing time which is approximately 6058 s along with a lead time of 29 days. This is found by the summation of the processing times of all the processes.

**T50 Deck Roller - Current State Value Stream Map**



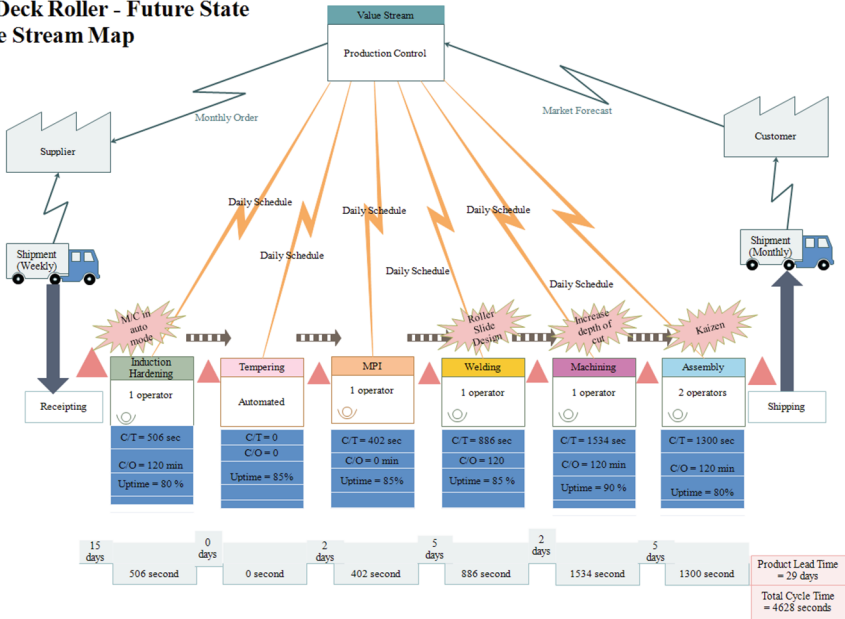
**Fig. 4.** Current value stream map for T50 deck roller

### 4.3 Managerial Relevance

The machining time of T50 deck roller was around 44 min which was twice than that required for T23 deck roller. This was due to the low depth of cut used in the CNC program. Roughing and finishing cycle were used for T50 deck roller because the amount of material to be removed was much more than that of T23 deck roller. Since the total machining time went beyond the Takt time limit, the roughing cycle was eliminated from the process. Also, the dimensions of the T50 deck roller raw material was found to be much larger than the required dimensions after machining. So steps were taken to reduce the size of the raw material and the depth of cut was also increased. The steps lead to a decrease in cycle time from 44 min to 25 min.

The improvements in the production rate of the deck roller by using low depth of cut in CNC machining can be observed through the future value stream map in Fig. 5. As shown in the figure the total cycle time has been reduced to 4628 s which in turn increased the production rate.

**T50 Deck Roller - Future State Value Stream Map**



**Fig. 5.** Future value stream map for T50 deck roller

## 5 Arena Simulation and Results Discussion

The T50 deck roller production line is modeled using arena simulation software which allows to visually represents the total number of units entering the system for different processes in the T23 deck roller assembly and also shows the number of units that go out of the production sequence. Depending upon the cycle times and the mean waiting times in the queues for different processes, the utilization of the machines for the different machines is calculated via simulation and the result is depicted in the bar graph.

Table 2 represents the information regarding the enhancement in the future stream map for the production of T50 deck roller as compared to its current value stream map. This change is due to the application of low depth of cut in the CNC machining of the deck roller along with the different lean tools. The change in the machine utilization from 0.42 to 0.75 is reflected through the increase in daily production from 9 rollers to 16 rollers and decrease in the cycle time of the production from 6058 to 4628 s.



**Table 2.** Current state vs. future state for T50 deck roller production

	Current VSM	Future VSM
Daily production	9 rollers	16 rollers
Assembly machine utilization	0.42	0.75
Induction hardening number out	45	56
Cycle time	6058 s	4628 s

## 6 Conclusion

This paper focuses on the cycle time reduction in the production of deck roller in an ABC manufacturing company. Different strategies and the use of lean tools and principles achieved the goals of waste reduction leading to higher efficiency in the production of the components. The current value stream map was developed to get a comprehensive idea about the existing production system by using the 3G and Kanban techniques to eliminate the wastes from the inventory. A time study was used to measure the cycle time of all the processes while work measurement was done to categorize the work elements into value added and non-value added activities. Future value stream map was developed to study the effects of the changes included in the production system on the production parameters like machine utilization, daily production and cycle times and then was compared with the current value stream map. The experimental results obtained after comparison of the current and future value stream mapping analysis proved that value stream mapping synergized with Lean principles for optimization of cycle time. Where, for the production of deck roller assembly with around 48% improvement in daily production activities, an average of 30% improvement in the utilization of available machines and the cycle time is improved by more than 1000 s.

## References

1. Starzyńska, B., Grabowska, M., Hamrol, A.: Effective management of practitioners' knowledge - development of a system for quality tool selection. In: International Academic Conference on Economic Science and Management Engineering, Guilin, China (2016)
2. Starzyńska, B., Hamrol, A.: Excellence toolbox: decision support system for quality tools and techniques selection and application. *Total Qual. Manag. Bus. Excell.* **24**(5–6), 577–595 (2013). doi:[10.1080/14783363.2012.669557](https://doi.org/10.1080/14783363.2012.669557)
3. Sabahudin, J., Diering, M., Brdarevic, S.: Opinions of the consultants and certification houses regarding the quality factors and achieved effects of the introduced quality system. *Tehnicki Vjesn. Tech. Gaz.* **19**(2), 211–220 (2012)
4. Kujawińska, A., Vogt, K., Wachowiak, F.: Ergonomics as significant factor of sustainable production. In: Golinska, P., Kawa, A. (eds.) *Technology Management for Sustainable Production and Logistics*, pp. 193–203. Springer, New York (2015)
5. Diering, M., Hamrol, A., Kujawińska, A.: Measurement system analysis Combined with Shewhart's Approach. In: *Key Engineering Materials*, vol. 637, pp 7–11 (2015). ©Trans Tech Publications, Switzerland. doi:[10.4028/www.scientific.net/KEM.637.7](https://doi.org/10.4028/www.scientific.net/KEM.637.7)

6. Kluczek, A.: Application of multi-criteria approach for sustainability assessment of manufacturing processes. *Manage. Prod. Eng. Rev.* **7**(3), 62–78 (2016). doi:[10.1515/mper-2016-0026](https://doi.org/10.1515/mper-2016-0026)
7. Kłos, Sławomir: Implementation of the AHP method in ERP-based decision support systems for a new product development. In: Dregvaite, Giedre, Damasevicius, Robertas (eds.) *ICIST 2015*. CCIS, vol. 538, pp. 199–207. Springer, Cham (2015). doi:[10.1007/978-3-319-24770-0\\_18](https://doi.org/10.1007/978-3-319-24770-0_18)
8. Kłos, Sławomir, Patalas-Maliszewska, Justyna: Throughput analysis of automatic production lines based on simulation methods. In: Jackowski, Konrad, Burduk, Robert, Walkowiak, Krzysztof, Woźniak, Michał, Yin, Hujun (eds.) *IDEAL 2015*. LNCS, vol. 9375, pp. 181–190. Springer, Cham (2015). doi:[10.1007/978-3-319-24834-9\\_22](https://doi.org/10.1007/978-3-319-24834-9_22)
9. Kujawińska, A., Rogalewicz, M., Diering, M.: Application of expectation maximization method for purchase decision-making support in welding branch. *Manage. Prod. Eng. Rev.* **7**(2), 29–33 (2016). doi:[10.1515/mper-2016-0014](https://doi.org/10.1515/mper-2016-0014)
10. Kujawinska, A., Rogalewicz, M., Diering, M., Piłacińska, M., Hamrol, A., Kocharński, A.: Assessment of ductile iron casting process with the use of the DRSA method. *J. Min. Metall. B Metall.* **52**(1), 25–34 (2016). doi:[10.2298/JMMB150806023K](https://doi.org/10.2298/JMMB150806023K)
11. Rogalewicz, M., Sika, R.: Methodologies of knowledge discovery from data and data mining methods in mechanical engineering. *Manage. Prod. Eng. Rev.* **7**(4), 97–108 (2016)
12. Buń, P.K., Wichniarek, P., Górski, F., Grajewski, D., Zawadzki, P.: Possibilities and determinants of using low-cost devices in virtual education applications. *EURASIA J. Math. Sci. Technol. Educ.* **13**(2), 381–394 (2017). doi:[10.12973/eurasia.2017.00622a](https://doi.org/10.12973/eurasia.2017.00622a)
13. Górski, F., Buń, P., Wichniarek, R., Zawadzki, P., Hamrol, A.: Effective design of educational virtual reality applications for medicine using knowledge-engineering techniques. *EURASIA J. Math. Sci. Technol. Educ.* **13**(2), 395–416 (2017). doi:[10.12973/eurasia.2017.00623a](https://doi.org/10.12973/eurasia.2017.00623a)
14. Fang, Y.: A method of meta-mechanism combination and replacement based on motion study. *Prod. Manufact. Res.* **3**, 310–323 (2014)
15. Pulkurte, R., Masilamani, R., Sonpatki, S., Dhake, R.: Cycle time reduction in assembly line through layout improvement, ergonomics analysis and lean principles. *Int. J. Appl. Sci. Eng. Res.* **3**(2), 455–463 (2014)
16. Gnanavel, S.S., Balasubramanian, V., Narendran, T.T.: An alternative layout to improve productivity and worker well-being in labor demanded lean environment. In: 6th International Conference on Applied Human Factors and Ergonomics and the Affiliated Conferences (2015)
17. Womack, J.P., Jones, D.T., Roos, D.: *The Machine That Changed The World: The Story of Lean Production*. Rawson Associates, New York (1990)
18. Arvind, R., Gunasekaran, N.: A literature review on cycle time reduction in material handling system by value stream mapping. *Int. J. Res. Appl. Sci. Eng. Technol.* **2**, XII (2014)
19. Seifermann, S., Böllhoff, J., Metternich, J., Bellaghnach, A.: Evaluation of work measurement concepts for a cellular manufacturing reference line to enable low cost automation for lean machining. In: *Proceedings of the 47th CIRP Conference on Manufacturing Systems* (2014)